

Yours Free

Ph: 3603282
Letters & news tips:
news@iballmedia.co.nz
Advertising:
sales@iballmedia.co.nz

iBall

NEWS FROM A FRESH PERSPECTIVE

Auckland September 10, 2007

My Kiwi View

BRIAN O'FLAHERTY

How comfy are you in your own skins?

Page 6

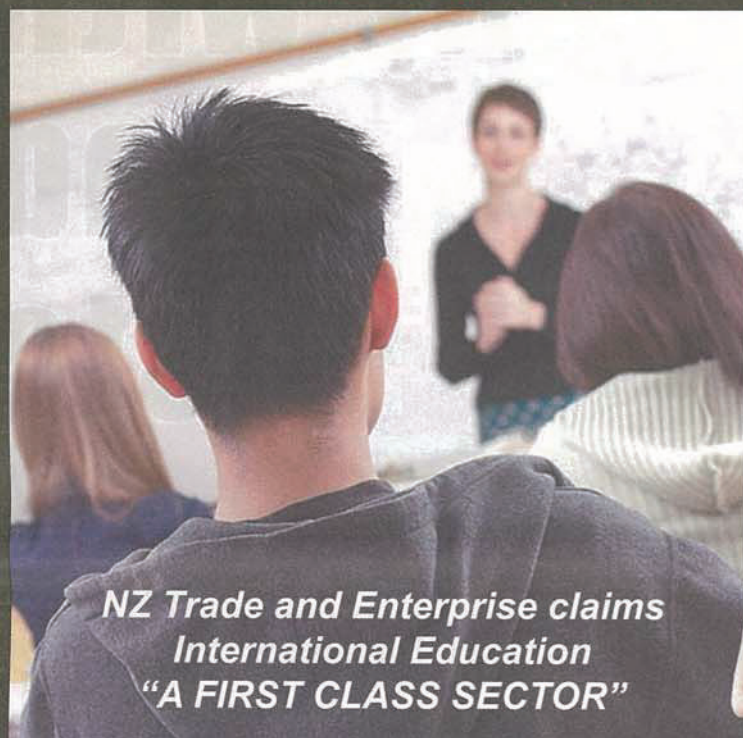


Editor Says

LINCOLN TAN

Give international students a real Kiwi experience

Page 2



*NZ Trade and Enterprise claims
International Education
"A FIRST CLASS SECTOR"*

OH, REALLY?

Encounters with racism, bad experiences with ghetto education providers and failure to make Kiwi friends, many international students leave NZ with a bad taste. YAHAN WU reports on pgs 2 and 3.



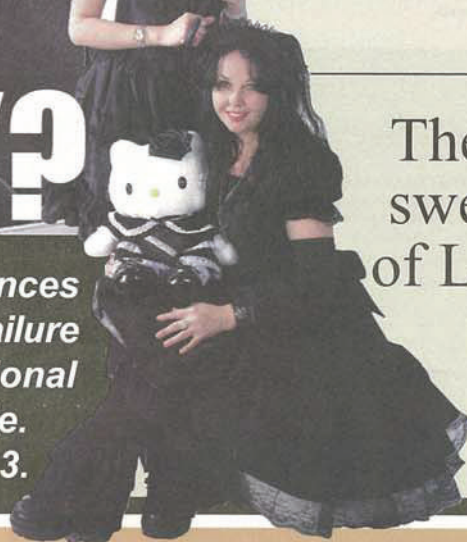
These cakes will send you over the Moon

Pg 7



The sweet, sweet taste of Loli-Pop fashion

Pg 16



Inside



Can they bring home the Cup?

Pg 5



Eat with your fingers at this spiced rice paradise

Pg 9

Dare you take up the Wushu challenge?

Pg 15



Sweet, sweet taste of Loli-Pop fashion

By Yahan Wu

KNEE length skirts with a petticoat underneath. Socks or stockings pulled up over the knees housed in child-like shoes completed with a sweet, serene smile and probably, an umbrella.

Japan's street wear has always been known to be quite provocative and this year's Japanese Loli-Pop exhibition at the Auckland Museum will give people a taste of this so-called underground fashion.

The museum will be open for all who wants to take a glimpse of the Japanese Gothic Lolita phenomenon from Sep 15 to Nov 18.

Auckland Museum will explore the origins of gothic and Lolita, its significance in Japan's pop culture, the fashion's history and relationship with music, the use of "Pulip" dolls and New Zealand's growing fascination with the street fashion.

This is an exciting exhibition

for those into fashion and "otaku" and it runs alongside the opening of the Museum's new Arts of Asian Gallery.

Curator Kathryn Hardy Bernal, lecturer in Contextual and Theoretical Studies at AUT says that the exhibition aims to explore the relationships between the Loli-Goth and popular culture.

Having started in the seventies, its rise to prominence and media attention occurred by the late nineties around the time of Japan's economic instability, leading some in the field of psychiatry observing its relation to deep anxiety and a longing for childhood security.

Purveyors of this culture also dissociate it with an obvious reference to Vladimir Nabokov's novel, noting that they're looking "cute" and "elegant" rather than overtly sexual.

Ashleith Quayle, 17, organized a Loli Fest in April this year (although only four people turned

up), and said that "being doll-like is just so much different than other fashions. It's also very elegant."

"We mostly wear it in the city and people just look at us and smile and give us a nod."

Other garments are either dresses in one or more pieces, or made to be worn over a blouse. Lace-trimmed headdresses, mini-top hats worn to one side, and intricate old-fashioned jewelry are some favored accessories for Lolitas.

The exhibition will feature a visual framework which is incorporated by two photographic series taken on the streets of Tokyo documenting current incarnations of Gothic & Lolita in Japan. This is supported by images of local Loli-Goths, contributing to the New Zealand context of the Exhibition.

Exhibition runs from: Sep 14 - Nov 18, Tamaki Gallery, Auckland Museum. Exhibition Free with Donation



Left: Bevan Chuang and curator Kathryn Hardy Bernal

Local government elections 2007

Asians in the Elections



Would their ethnicities work for or against them? Interviews with mayoral candidate Peter Chan and community board candidates Peter Young, Johnson Li and more...

A special report, iBall Sep 24

NZ Jewellers Ltd
Manufacturing Jewellers

18k Gold and Diamond Specialists

Spring Sale up to

50% OFF

DIESEL **D&G** **adidas** **MICHAEL MICHAEL KORS**

EMPORIO ARMANI

Don't miss NZ Jewellers BIG Spring Sale where you can save

30% off Silver Jewellery

Up to 30% off all Brand Watches

Up to 50% off all Gold and Diamond Jewellery

And Specials on all Manufacturing and Remodeling

For jewellery that is as unique as you are visit NZ Jewellers, where all jewellery is exquisitely hand crafted in 9k, 14k, 18k Gold or Platinum and set beautifully with GIA certified conflict free diamonds.

Town Centre Drive, Botany Town Centre, Next door to the Coffee Club, PH 09 277 7746